

SODAQ

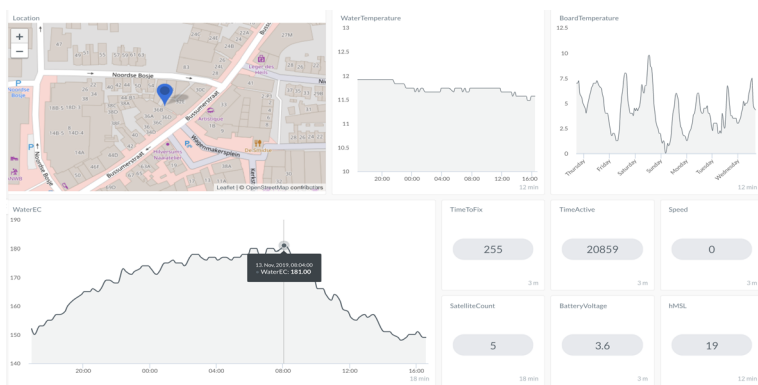
WaterEC

- Automatic temperature compensation
- Bluetooth connectivity for data acquisition and firmware updates
- USB connectivity for verbose data output and device calibration
- Simple calibration with standard 1413 $\mu\text{S/cm}$ solution
- Self-calibration to reduce long-term accuracy drift



The SODAQ WaterEC is an electrical conductivity measurement device with an integrated 2-pole measuring cell and Bluetooth connectivity. Data can be collected using a smartphone. It analyses the mineral and salt contents of water on arable land.

Similarly, the device can be used to measure water pollution around industrial sites, so that communities near factories can ensure that their land and animals are protected from high levels of dangerous substances.



VIEW DASHBOARD HERE: bit.ly/SODAQEC

Measurement | Accuracy

Conductivity

0...200 $\mu\text{S/cm}$ | $\pm 5\%$
200...20.000 $\mu\text{S/cm}$ | $\pm 2\%$

Temperature

-10...+50 $^{\circ}\text{C}$ | $\pm 0.5^{\circ}\text{C}$

Operating conditions: -10.0 to +50 $^{\circ}\text{C}$

SODAQ

Bussumerstraat 34
1211 BL Hilversum
The Netherlands

www.sodaq.com
info@sodaq.com
+31 35 3000 301